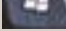
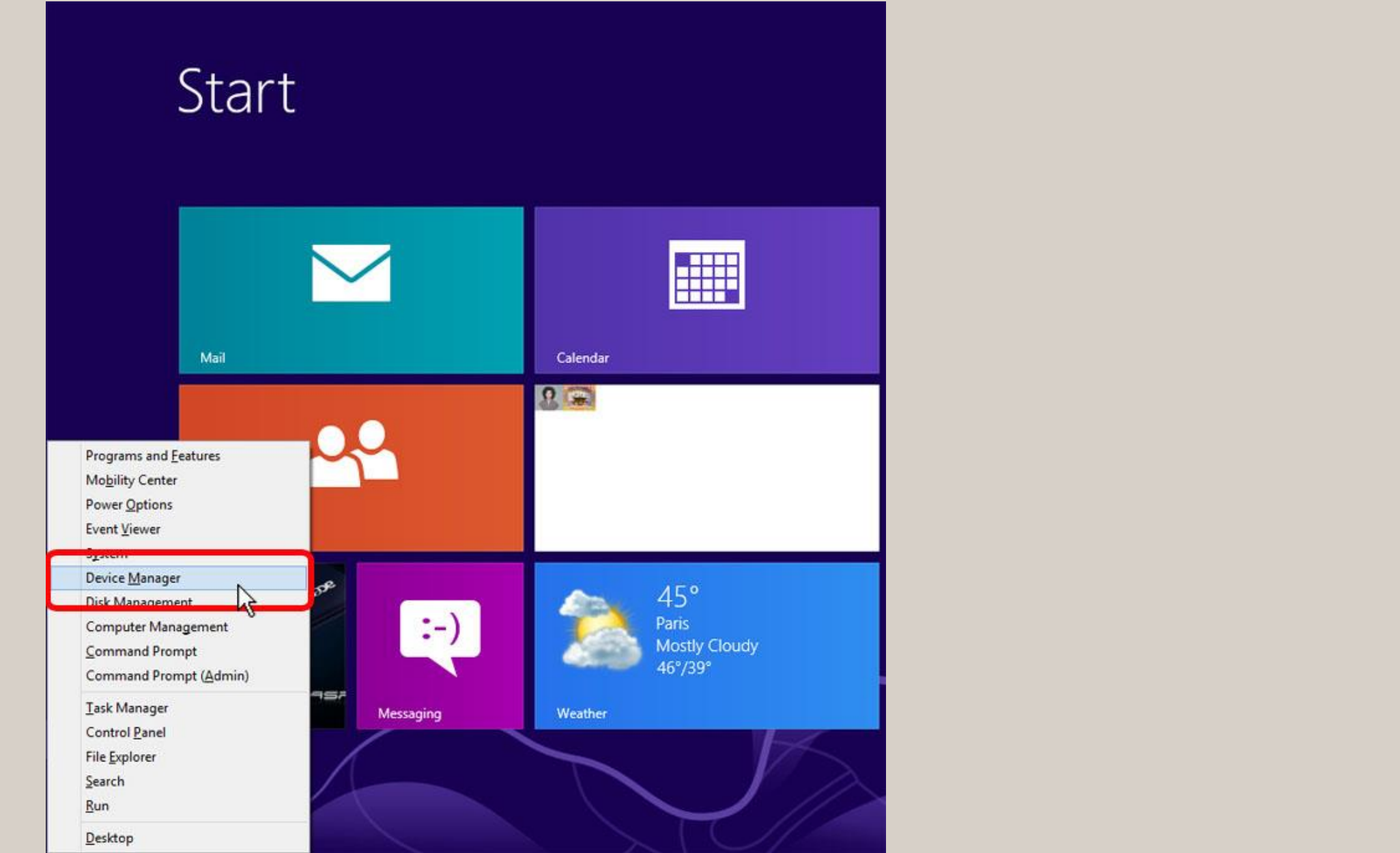


1. With the USB adapter cable plugged into the computer, follow these steps to open the Device Manager:

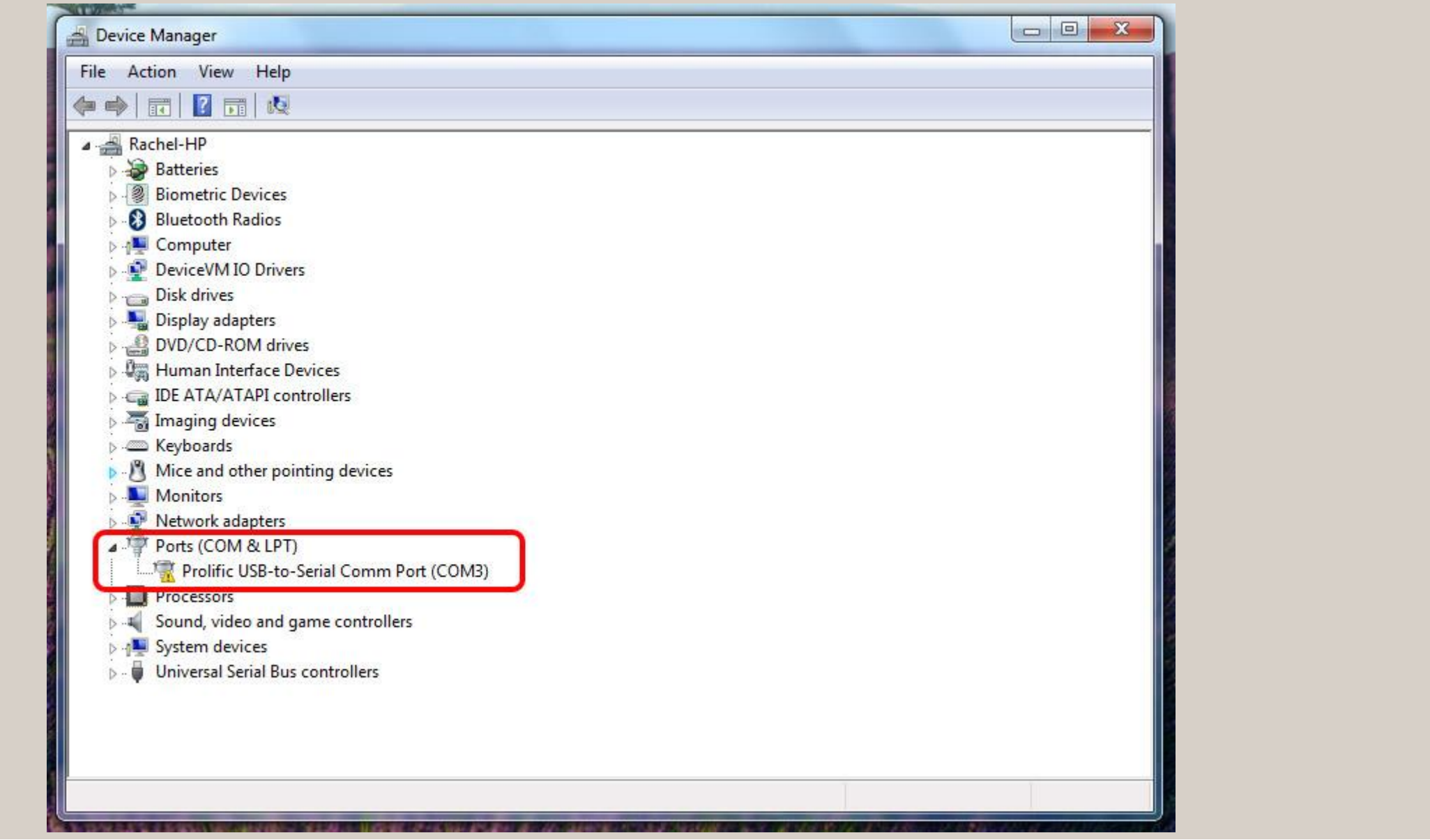
a. From the Start screen, push and hold the Windows key () and then press "x" on your keyboard. Choose "Device Manager" from the menu that pops up.



2. Look down the list of items for the "Ports" category. Click the arrow to the left of "Ports" to expand the category. The USB adapter will show as "Prolific USB-to-Serial..." followed by the assigned COM port number. If there is a small error icon with an exclamation mark as shown here, Windows installed the wrong driver.

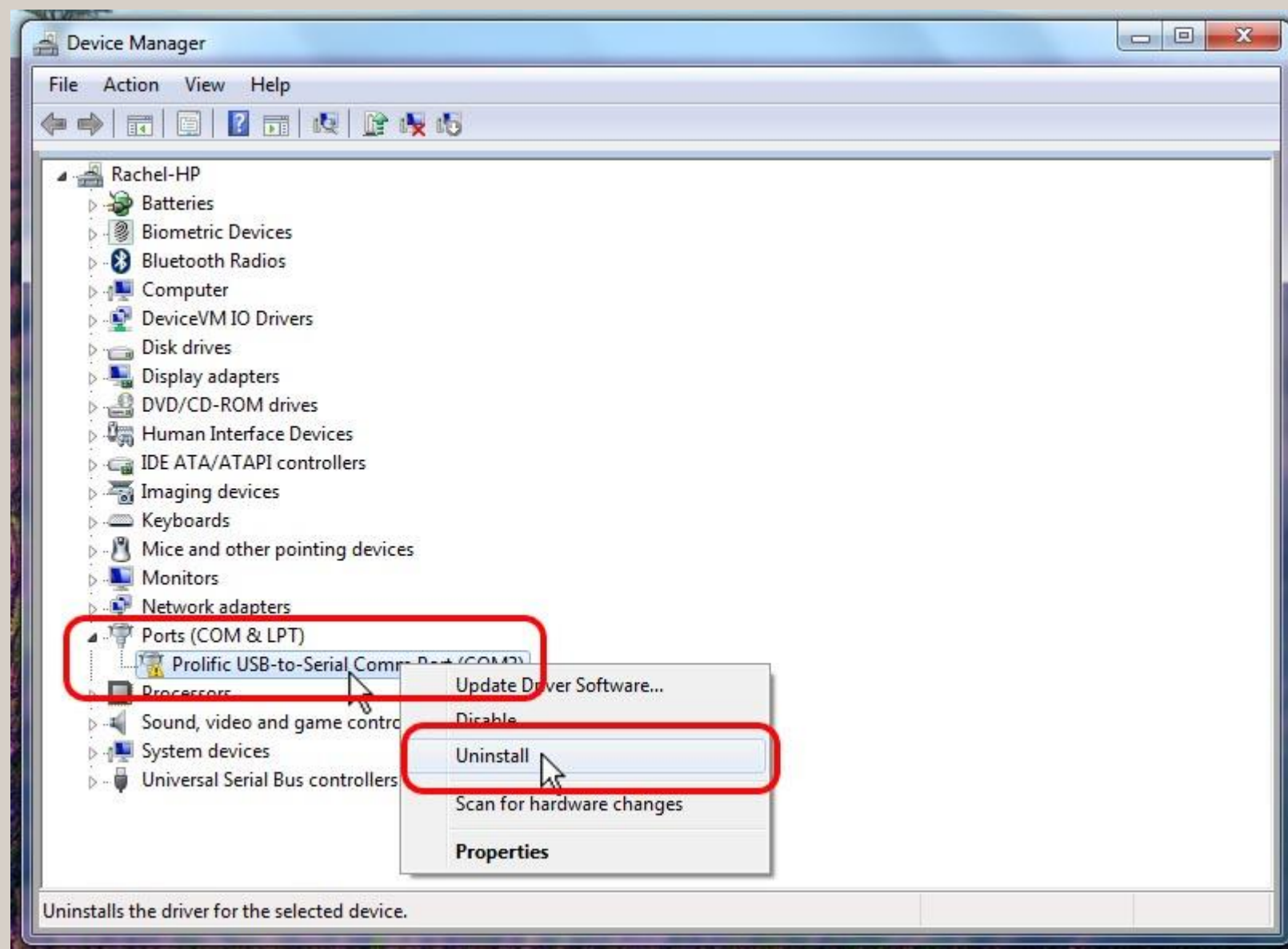
Note 1: If an error is NOT shown, then the driver is installed correctly – do NOT follow the rest of this guide.

Note 2: If the "Ports" category is not present, or the "Prolific USB-to-Serial..." device is not listed under "Ports," then click [here](#).

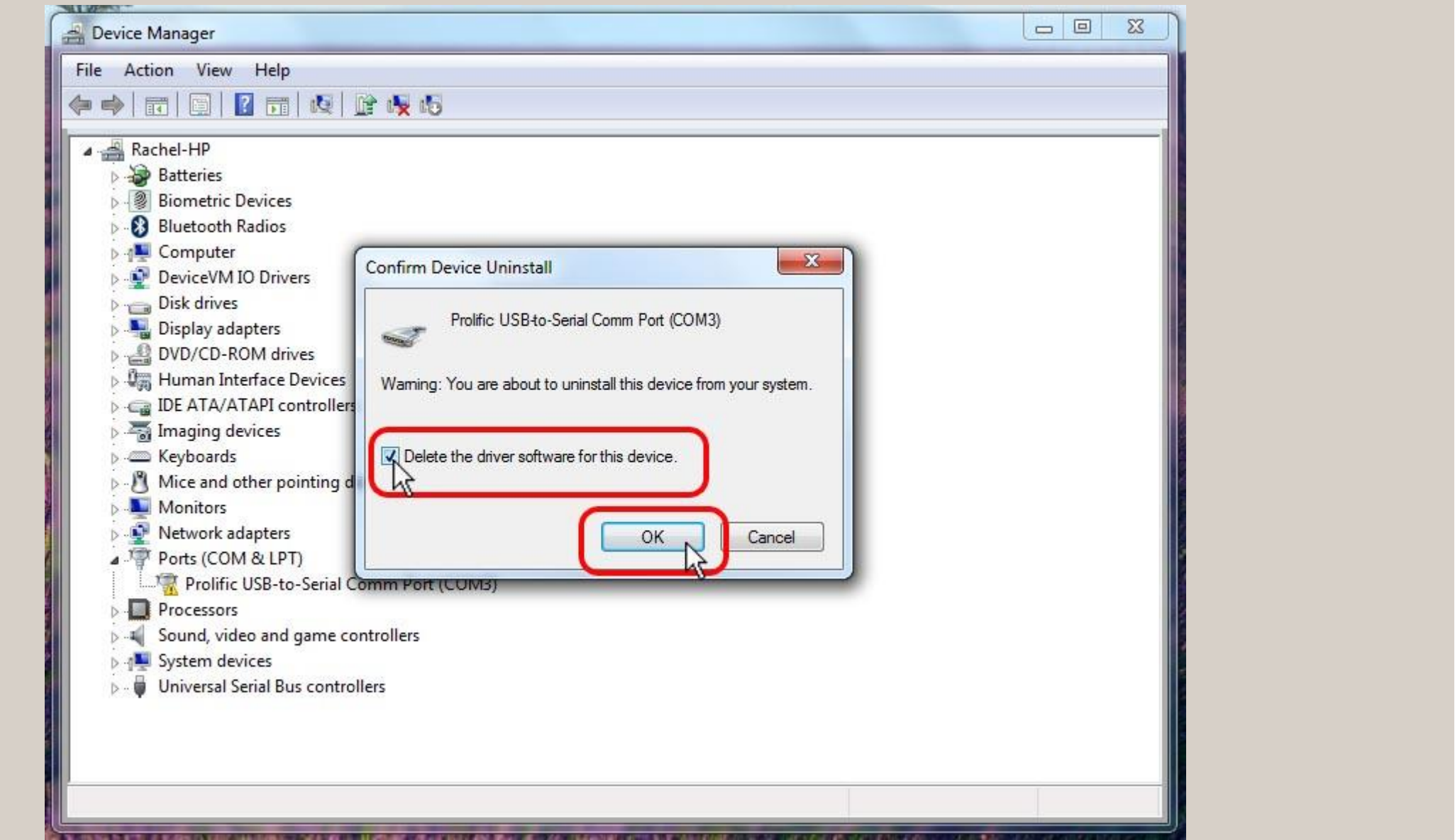


3. Uninstall the USB adapter and its drivers:

a. Right click on "Prolific USB-to-Serial Comm Port" and choose "Uninstall"

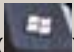


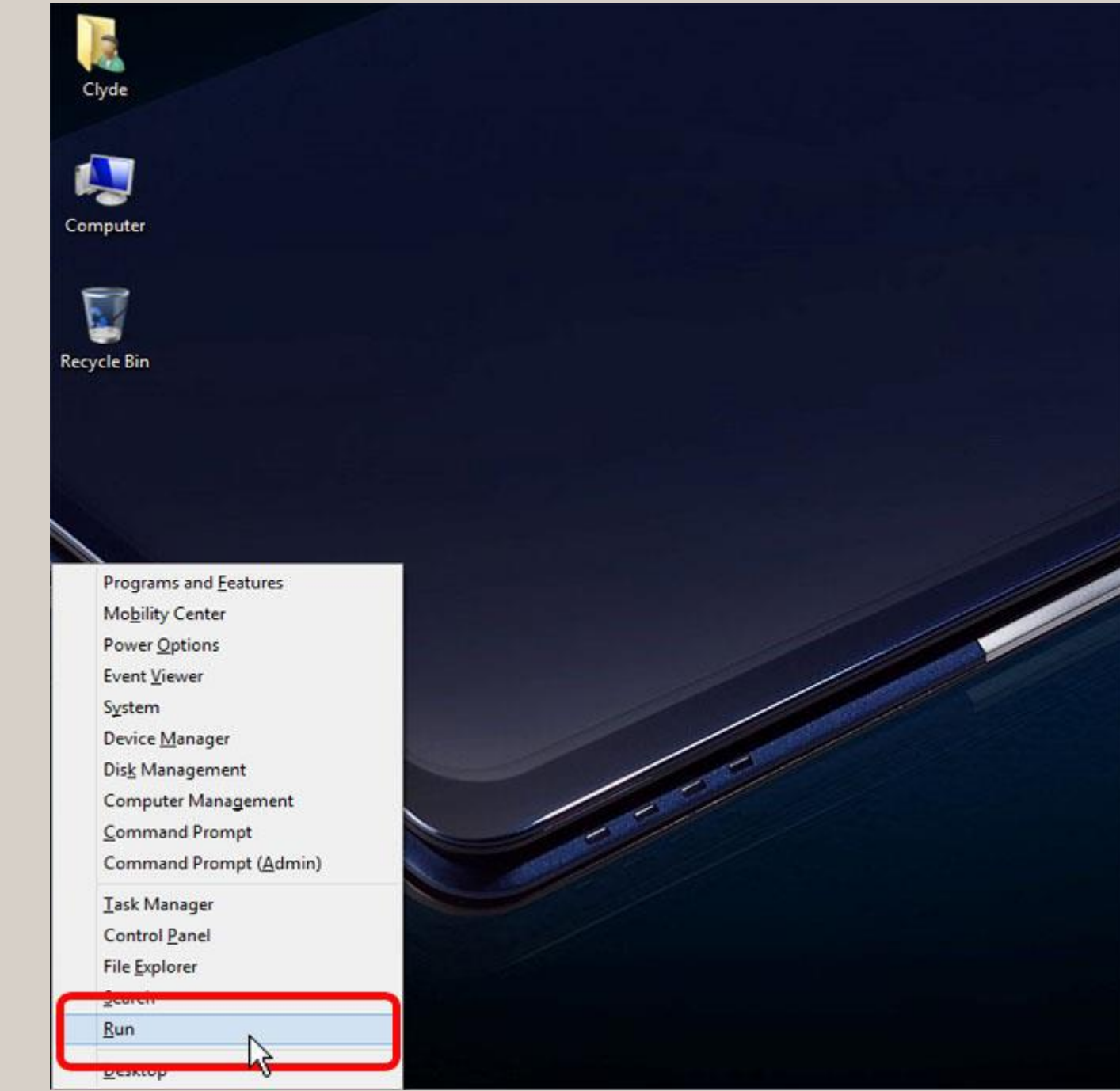
b. When asked to confirm, choose to delete the driver software and click "OK"



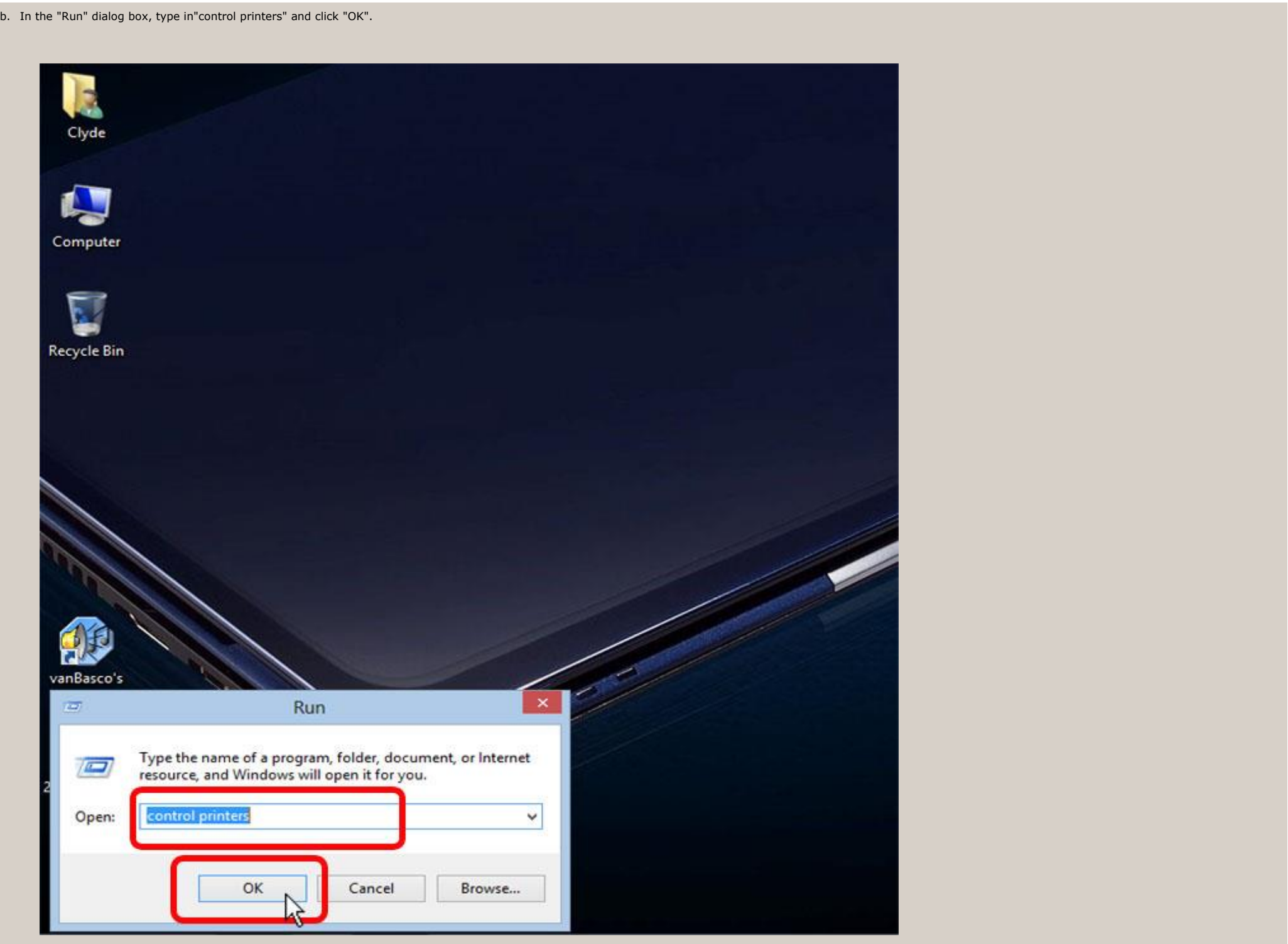
c. After the uninstall completes, unplug the USB adapter from your computer and close the Device Manager. Do NOT plug the USB adapter back into the computer.

4. Disable Windows from automatically choosing its own drivers:

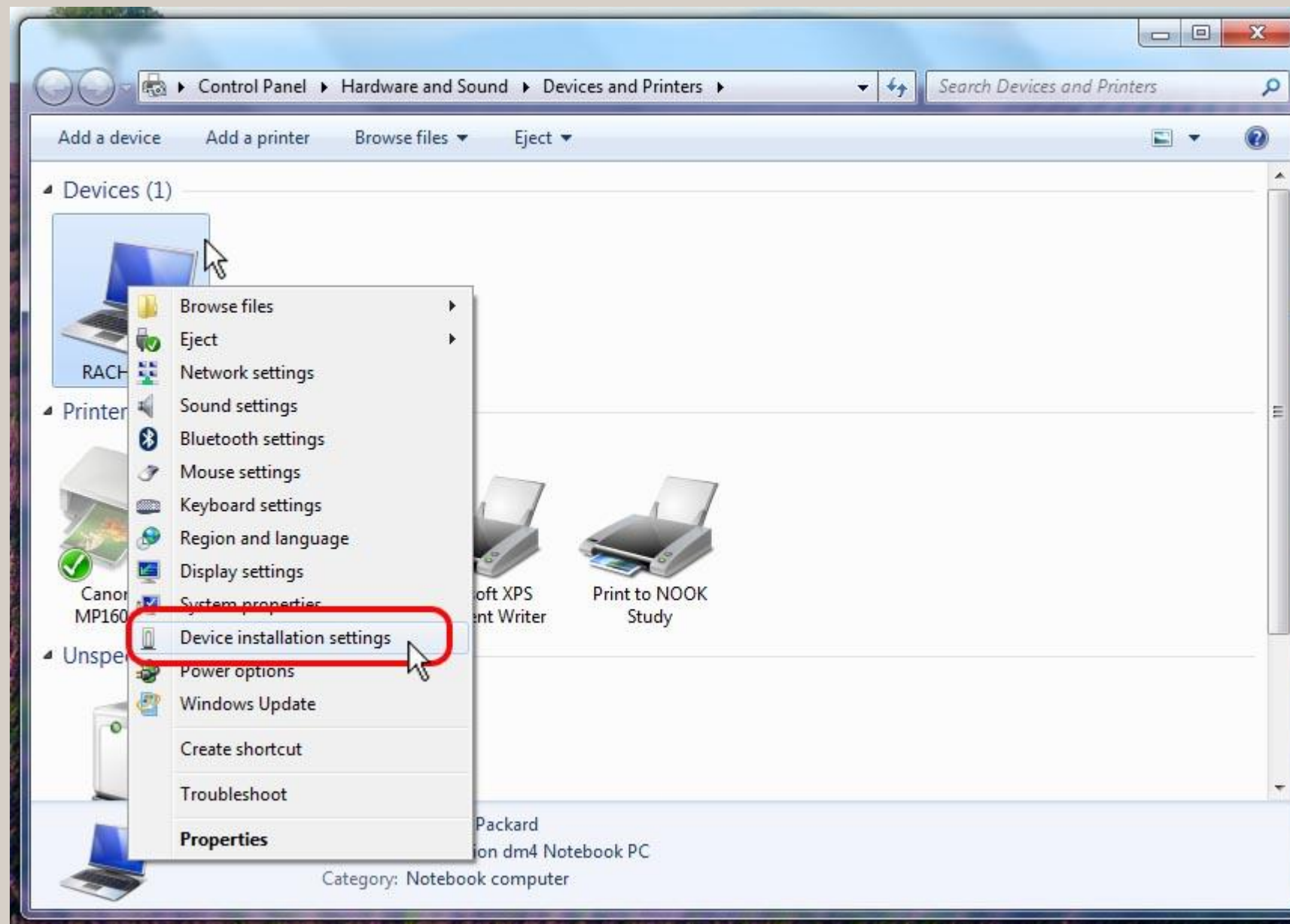
a. From the Desktop, push and hold the Windows key () and then press "x" on your keyboard. Choose "Run" from the menu that pops up.



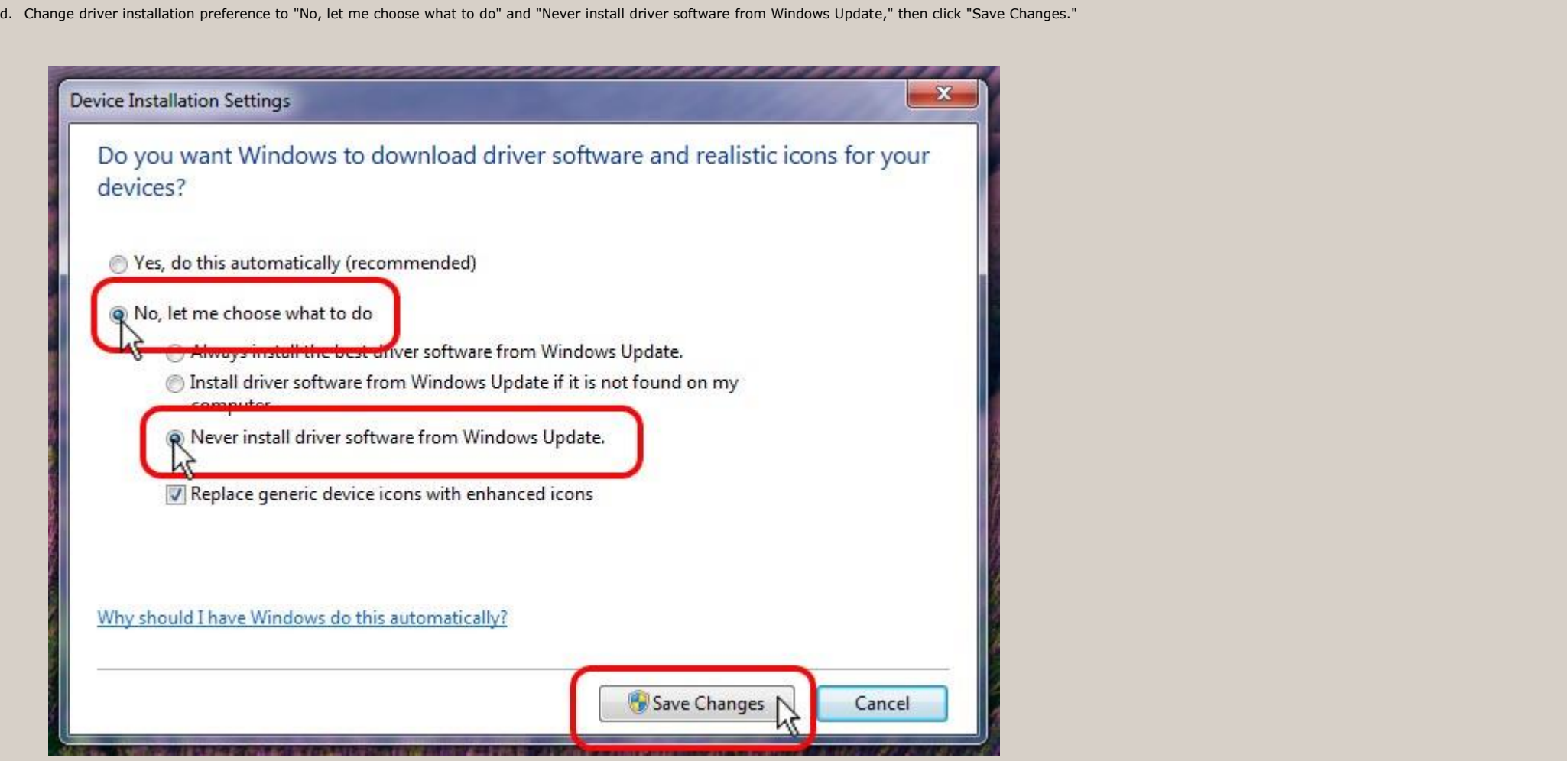
b. In the "Run" dialog box, type in "control printers" and click "OK".



c. Right click on your computer's icon under "Devices" and choose "Device Installation Settings"

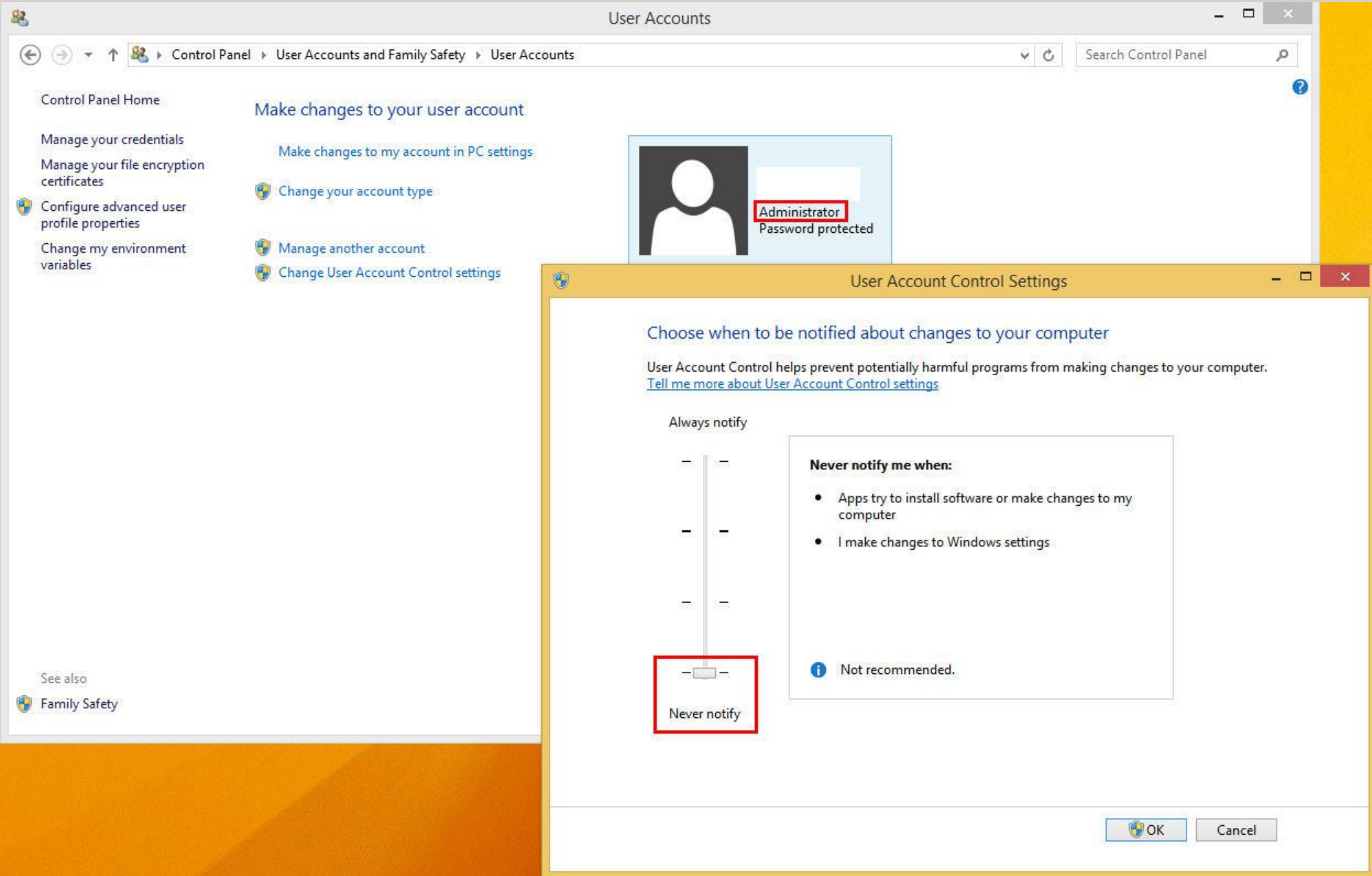


d. Change driver installation preference to "No, let me choose what to do" and "Never install driver software from Windows Update," then click "Save Changes."



- 5. Reboot your computer
- 6. Uninstall the USB drivers at the control panel-> uninstall program-> PL2302 USB...
- 7. Reboot your computer
- 8. Install the USB_DriverInstaller_v1.5.0

9. Login with administrator and Disable UAC



10. Connect the datalogger to the PC

