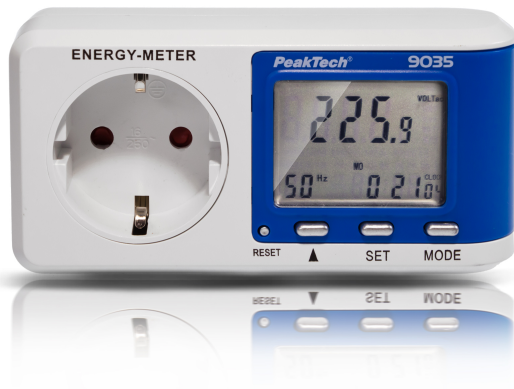


«PeakTech® P 9035» Energy meter ~ 0.005 A ... 16,000 A ~ 3680W ~ 0.1W resolution



€14.90

Prices excl. VAT plus shipping costs and possibly lower value surcharge

Product number: P 9035

GTIN/EAN: 4250569402302

## Description

---

The PeakTech 9035 is a high-precision energy cost meter for recording the energy consumption of electrical devices and for calculating the power consumption of a device by entering the electricity price. Thanks to the integrated power factor calculation, all modern consumers such as switched-mode power supplies, TV sets, fluorescent lamps, LED systems and of course, ohmic loads such as electric heaters and hobs can be measured precisely. In addition, the high resolution, the low response characteristic and even very small or stand-by loads from approx. 1 W can also be measured.

## Technical features

---

- Measurement of the energy cost (€), energy consumption (kWh), Voltage (V), Frequency (Hz), load current (A) and power factor
- Display of the maximum consumption (Wmax) with trigger time
- Display of time, day and consumption time
- Power factor measurement from about 1W
- Integrated overload indicator and child lock
- Reset button to reset all device functions
- CO2 emission calculation in CO2/kg
- Built-in rechargeable battery for memory conservation

PeakTech Prüf- und Messtechnik GmbH

Gerstenstieg 4

DE-22926 Ahrensburg

[www.peaktech.de](http://www.peaktech.de)



- High resolution of 0.005A
- High basic accuracy  $\pm 0.5\%$
- Safety: GS, EN 61010-1; CAT II 300 V
- Accessories: manual

## Specifications

---

**Display Type:** LCD

**Mains voltage:** 240 V AC; 50 Hz

**Over voltage category:** CAT II 300 V

**Power factor:** 0,1 ... 1,0

**TÜV/GS:**

**Wat hours max.:** 10000 kWh

**A AC max.:** 16 A